

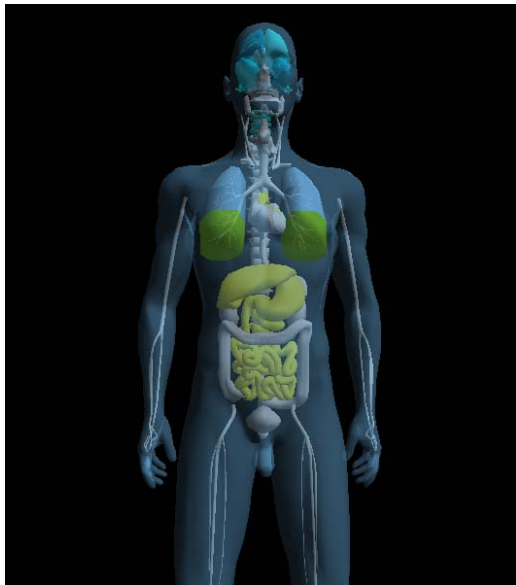
CENZITEK

EIS full body scan follow up:

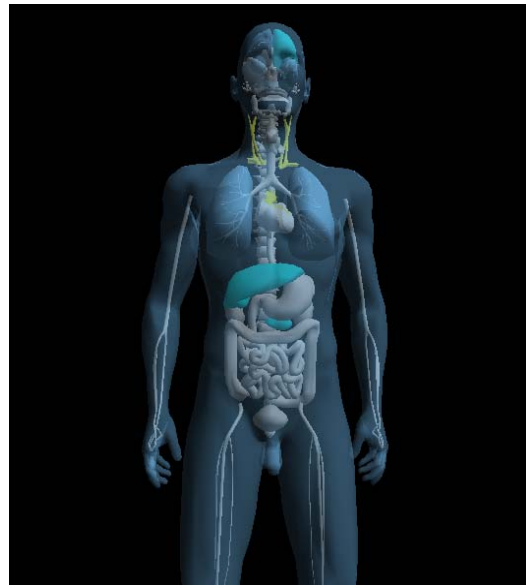
When the conductivity recorded is higher than the norms the EIS color codes the area in yellow or red. This is related to a cellular activity increase and oxygen uptake increase.

When the conductivity recorded is lower than the norms the EIS color codes the area in blue. This is related to a cellular activity decrease and oxygen uptake decrease.

First EIS Scan 15:40



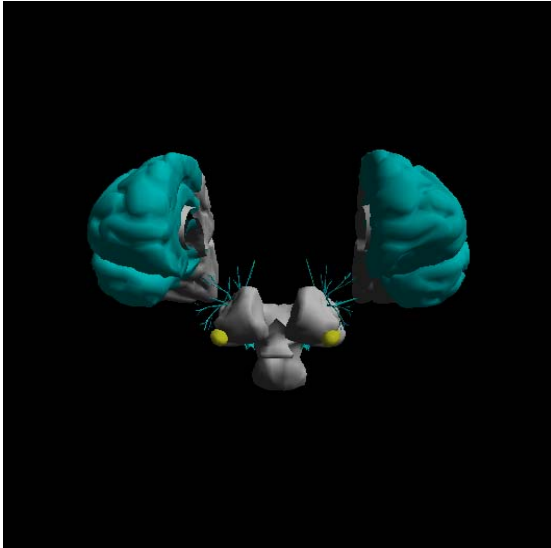
Second EIS Scan 15:53 + Bracelet



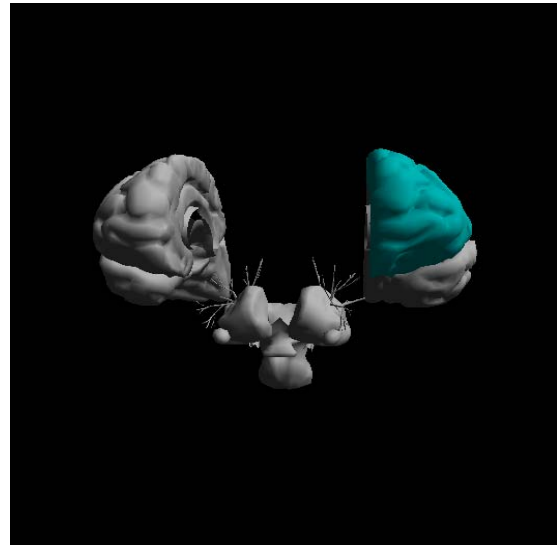
EIS Brain scan modeling:

Blue brain relates to a neuronal excitability decrease and oxygen uptake decrease in the tissue. For example, we have similar results, “Blue brain”, with patients with depression, and fatigue.

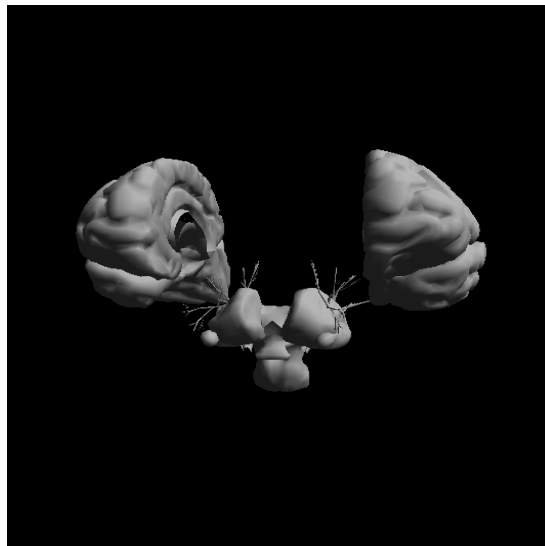
First EIS Scan 15:40



Second EIS Scan 15:53 + Bracelet

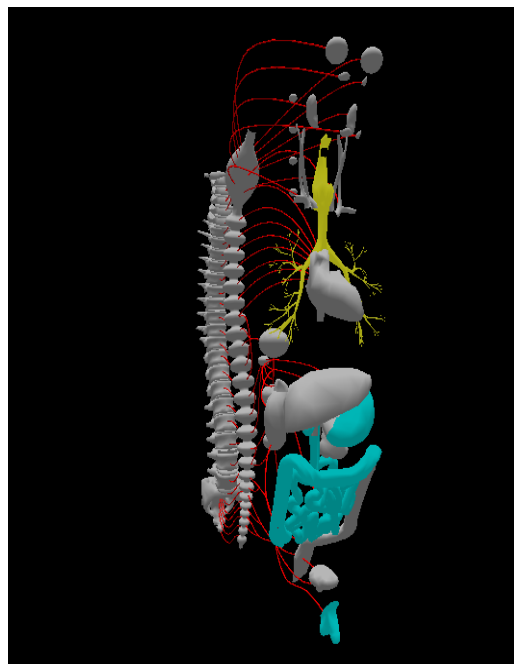


Third EIS Scan 16:04

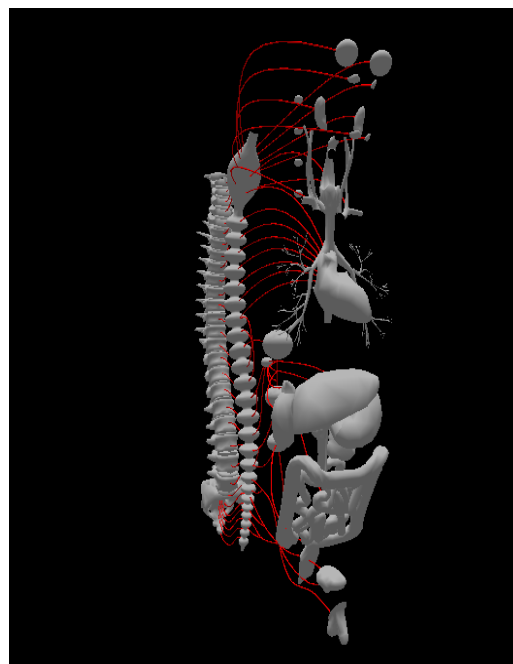


Follow up of the Neurovegetative system:

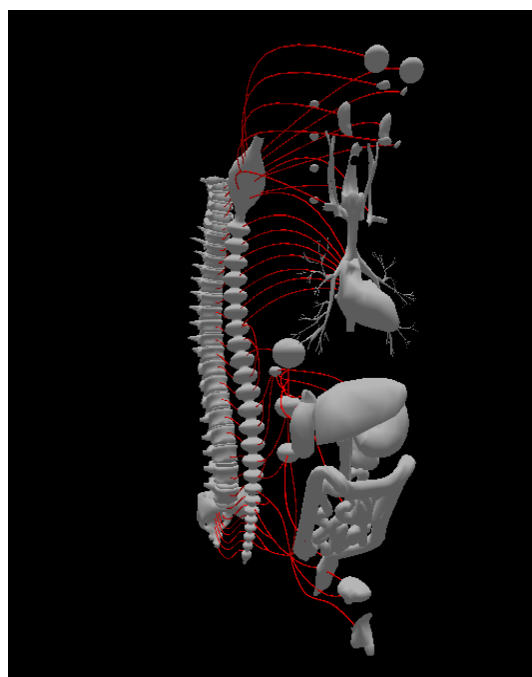
First EIS Scan 15:40



Second EIS Scan 15:53 + Bracelet



Third EIS Scan 16:04



Follow up before and after meditation of the EIS graph:

The volumes 9 and 10 are the recordings of the brain activity. LifeBEAT products appear to improve the neuronal excitability and bring back the level of conductivity of 9 and 10 to normal values.

